

# Hybrid Boilers – DUAL HYBRID

W-PFD 300 | 500

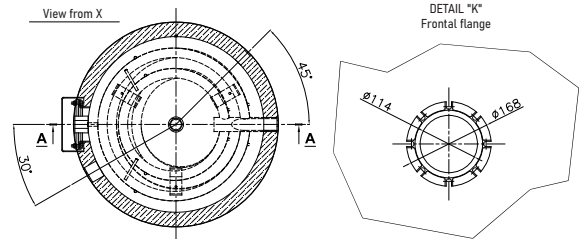
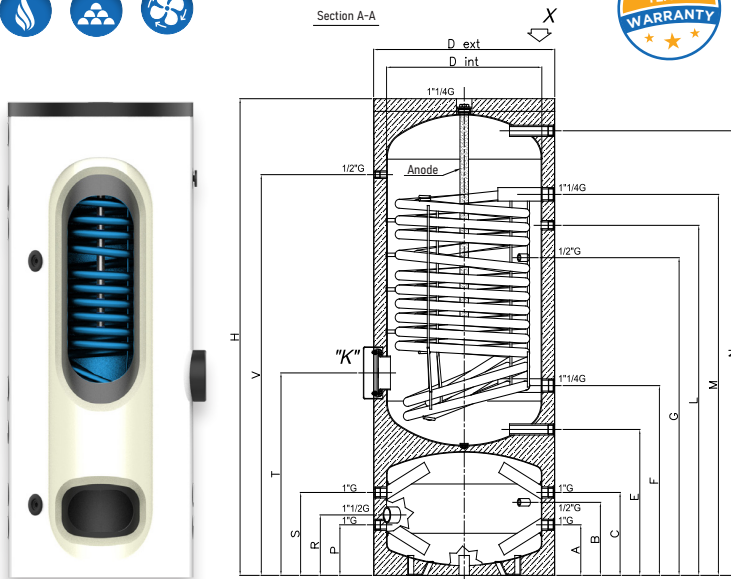


Tanks made of S235JR carbon steel: upper raw and lower with enamelling treatment, protected by a layer of long-lasting porcelain enamel, with 1 exchanger and inspection flange.

Possibility of inserting an electrical heating element on all versions.

These models are used for DHW production and heating. Enamelling and sizing of the magnesium anodes (supplied as standard) are carried out in accordance with DIN 4753 p.3.

The exterior is made of PVC.



SPECIFICATIONS		300 (300/100)	500 (500/140)
Total capacity	[l]	370	536
DHW Capacity (superior zone)	[l]	275	410
Puffer Capacity (inferior zone)	[l]	95	126
Total height with insulation (H)	[mm]	1695	2070
Tipping height	[mm]	1865	2235
External diameter with insulation (Dext)	[mm]	700	750
Internal diameter (Dint)		600	650
Insulation	[mm]	50 (Direct PU foam)	
Energy class - Total dispersion		C 78W	C 95W
Weight	[Kg]	140	205
Max boiler pressure	[bar]	10	
Max puffer pressure	[bar]	6	
Max boiler and puffer temperature	[°C]	95°	
Max exchanger temperature	[°C]	110°	
Exchanger surface	[m <sup>2</sup> ]	3,2	5,9
Serpentine water content	[l]	20,9	36,8

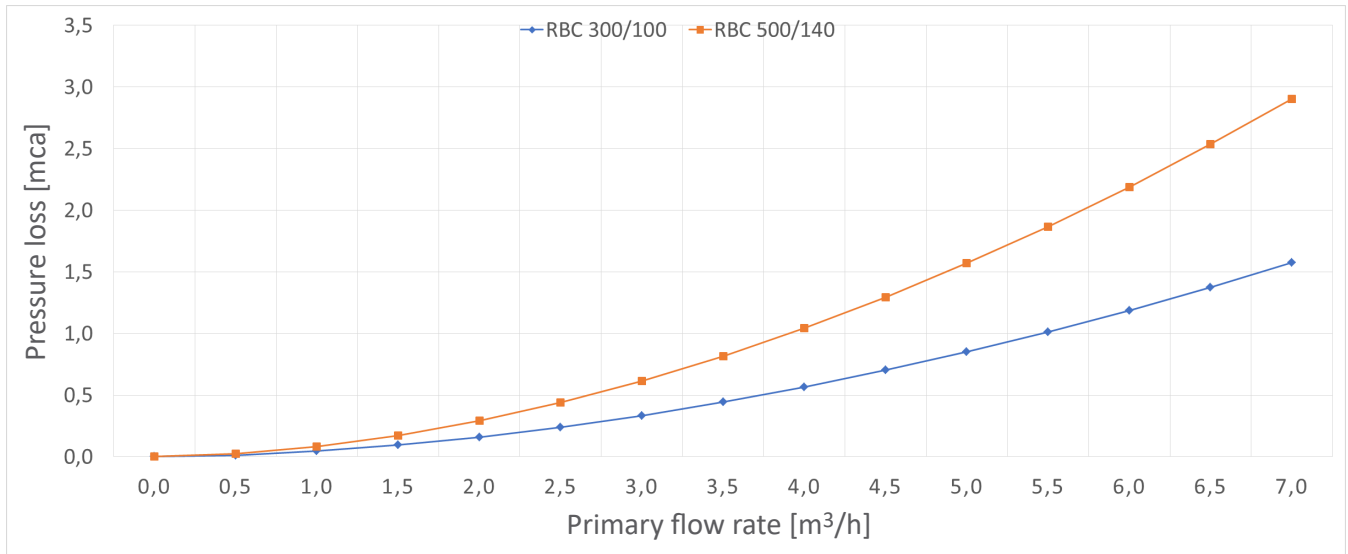
QUOTAS	A-P	B	C-S	E	F	G	L	M	N	R	T	V
W-PFD-300	180	260	295	519	675	1130	1245	1355	1581	215	720	1425
W-PFD-500	170	280	360	665	785	1315	1605	1725	1885	235	850	1765

COUPLINGS	Cold water Puffer	Probe	Hot water Puffer	Cold water	Return	Heating Probe	Recirculation	Output	Hot water	Electrical resistance	Flange	Thermo-meter
	A-P	B	C-S	E	F	G	L	M	N	R	T	V
mod.300	1" G	1/2" G	1" G	1" G	1" 1/4 G	1/2" G	3/4" G	1" 1/4 G	1" G	1" 1/2 G	-	1/2" G
mod.500	1" G	1/2" G	1" G	1" 1/4 G	1" 1/4 G	1/2" G	1" G	1" 1/4 G	1" 1/4 G	1" 1/2 G	-	1/2" G

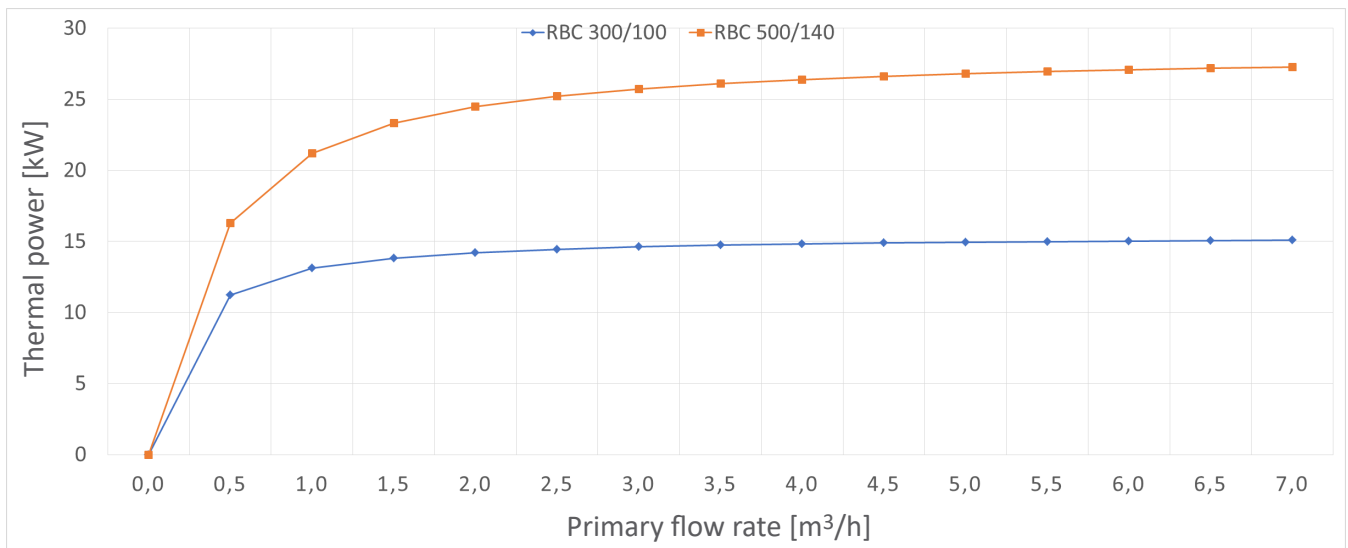
# Hybrid Boilers – DUAL HYBRID

W-PFD 300 | 500

## PRESSURE LOSSES DIAGRAM



## THERMAL PERFORMANCE DIAGRAM



## DHW PRODUCTION

