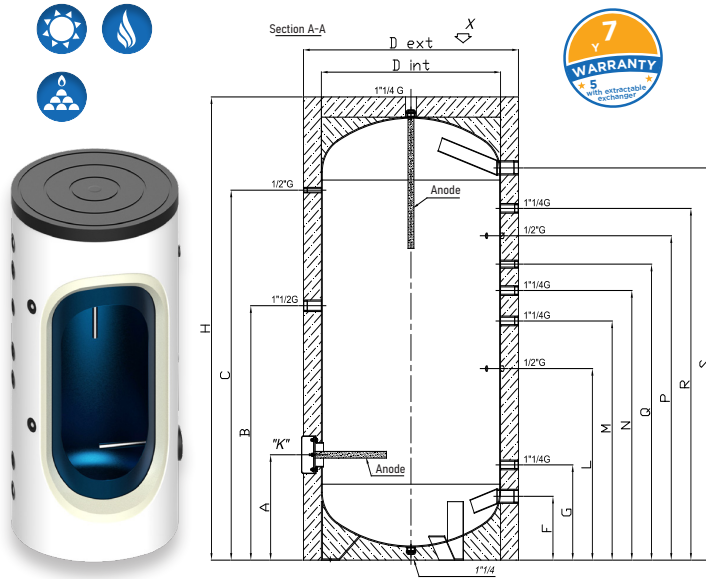


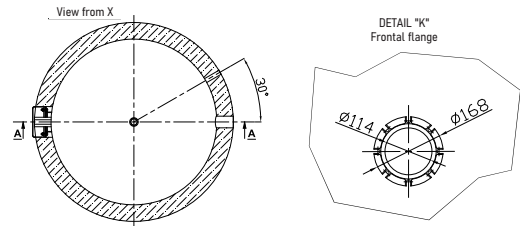
DHW boilers - TOTAL



W-TOT 200-1F | 300-1F | 500-1F | 800-1F | 1000-1F | 1500-1F | 2000-1F | 2500-1F | 3000-1F



Tanks made of S235JR carbon steel with enamelling treatment, protected by a layer of long-lasting porcelain enamel, with 1 flanges. Possibility of inserting an electrical resistance on all versions. These models are used for domestic or industrial hot water supply. Enamelling and sizing of the magnesium anodes (supplied as standard) are carried out in accordance with DIN 4753 p.3. The exterior is made of laminated PVC jacket.



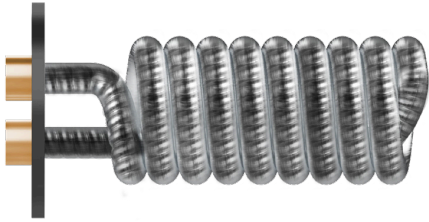
SPECIFICATIONS		200	300	500	800	1000	1500	2000	3000
Capacity	[l]	211	296	512	762	882	1488	2007	2823
Total height with insulation (H)	[mm]	1265	1710	1785	1845	2095	2285	2550	2980
Tipping height *without insulation	[mm]	1435	1850	1970	1890*	2115*	2325*	2595*	3010*
Diameter with insulation(Dext) without insulation (Dint)	[mm]	605 -	605 -	755 -	950 (790)	950 (790)	1200 (1000)	1300 (1100)	1400 (1200)
Insulation	[mm]	50 (Direct PU foam)			75 (rigid PU shells)		100 (Polyester fibre)		
Energy class - Total dispersion		C 69W	C 84W	C 104W	C 115W	C 125W	C 155W	C 183W	E 305W
Weight	[Kg]	58	76	103	173	194	322	396	579
Max boiler pressure	[bar]	10							
Max boiler temperature	[°C]	95							

QUOTAS	A	B	C	F	G	L	M	N	P	Q	R	S
W-TOT-200-1F	257	629	929	110	264	474	579	679	914	884	994	1120
W-TOT-300-1F	257	914	1384	110	264	654	849	979	1214	1141	1294	1565
W-TOT-500-1F	335	949	1480	175	305	685	865	985	1285	1235	1335	1595
W-TOT-800-1F	400	890	1460	220	385	685	835	990	1340	1235	1440	1590
W-TOT-1000-1F	400	890	1680	220	385	685	835	990	1340	1235	1440	1840
W-TOT-1500-1F	520	1255	1825	315	470	945	1180	1330	1600	1460	1735	1935
W-TOT-2000-1F	550	1310	2090	340	460	985	1160	1450	1825	1650	2000	2210
W-TOT-3000-1F	640	1400	2430	430	550	1075	1300	1790	2205	2040	2340	2550

COUPLINGS	Electrical resistance	Thermo-meter	Cold water inlet	Free connection	Probe	Free connection	Free connection	Probe	Recirculation	Free connection	Hot water
	B	C	F	G	L	M	N	P	Q	R	S
mod.200÷300	1" 1/2 G	1/2" G	1" 1/2 G	1" 1/4 G	1/2" G	1" 1/4 G	1" 1/4 G	1/2" G	3/4" G	1" 1/4 G	1" 1/2 G
mod.500÷800	1" 1/2 G	1/2" G	1" 1/2 G	1" 1/4 G	1/2" G	1" 1/4 G	1" 1/4 G	1/2" G	1" G	1" 1/4 G	1" 1/2 G
mod.1000÷3000	1" 1/2 G	1/2" G	2" G	1" 1/4 G	1/2" G	1" 1/4 G	1" 1/4 G	1/2" G	1" G	1" 1/4 G	2" G

DHW boilers - TOTAL

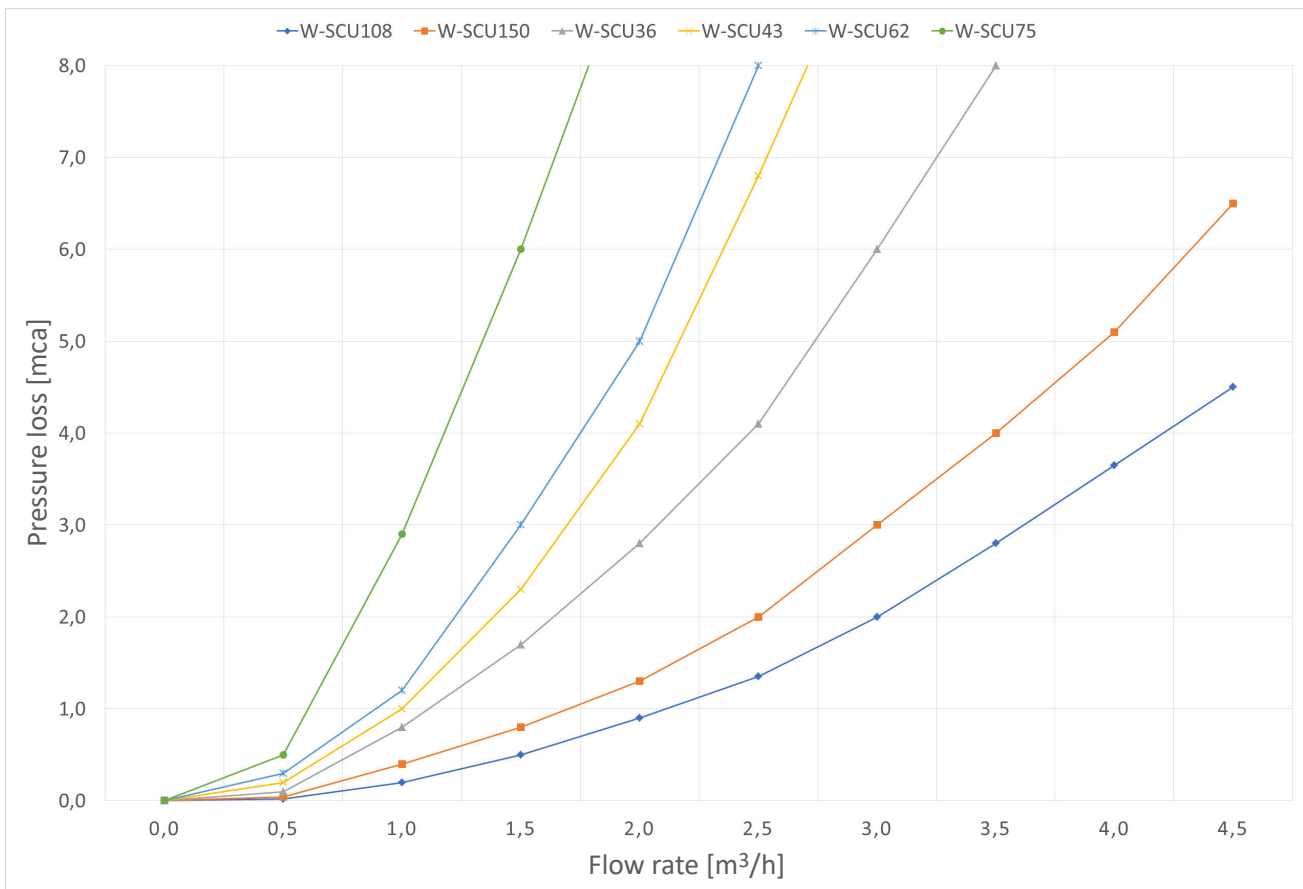
KIT EXTRACTABLE SERPENTINE



Removable serpentine kit, complete with DN170 (TOTAL 1F) or DN300 (TOTAL 2F e 3F) perforated flanges, tinned finned copper coil, flanges cover and bolts.

SPECIFICATIONS		W-SCU24	W-SCU36	W-SCU43	W-SCU62	W-SCU75	W-SCU108	W-SCU150
Power absorption	[kW]	24	36	43	62	75	108	150
Exchanger surface	[m ²]	0,8	1,21	1,80	2,63	3,20	4,54	6,34
Serpentine water content	[l]	-	0,7	1,4	2,0	2,5	3,5	5,0
Serpentine required flow rate	[m ³ /h]	-	1,0	1,6	2,3	2,8	3,9	5,5
DHW production 80°-60°C DIN 4708	[m ³ /h]	-	0,6	0,9	1,3	1,6	2,2	3,1
Pressure losses	[mbar]	-	387	245	748	1303	745	1930
Flange	∅ [mm]	170	300	300	300	300	300	300

PRESSURE LOSSES DIAGRAM



DHW boilers - TOTAL

STAINLESS STEEL 316L SHELL AND TUBE EXCHANGER KIT



Including flange with 2 × 1" connections, gaskets and bolts, for TOTAL 2F and 3F models.

Code	Exchange surface [m ²]	Flange ø [mm]	Length L [mm]
W-FASTUB-050	0,5	DN300	440
W-FASTUB-075	0,75	DN300	440
W-FASTUB-100	1	DN300	560
W-FASTUB-150	1,5	DN300	835
W-FASTUB-200	2	DN300	1100

