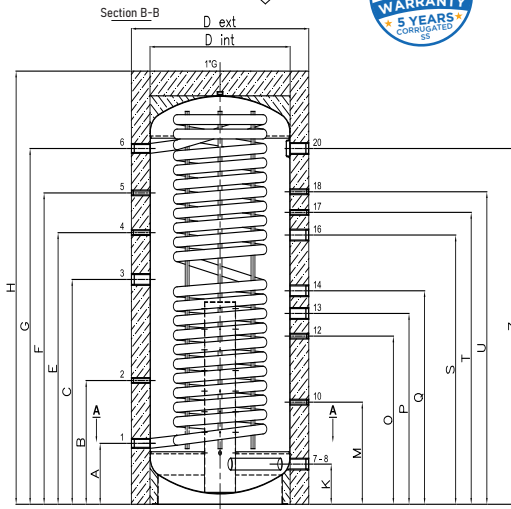


Combi tanks for heating and DHW – MULTIFRESH



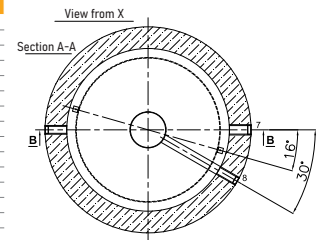
W-MFR 300* | 500 | 800 | 1000 | 1500 | 2000



With internal diffuser for optimal stratification. Raw tanks made of carbon steel S235JR tank-in-tank type, without exchangers. Possibility of inserting an electric heater on all versions. These models are used for DHW production (semi-rapid), storage and heating water production.

The insulation is made of direct PU foam or polyester wadding, the exterior is made of laminated PVC jacket.

Num. Attacco	LEGENDA
1	Cold water
2	Probe
3	Resistance
4	Probe
5	Thermometer
6	Hot water
7-8	Technical water return
10	Probe
12	Probe
13	Free connection
14	Free connection
16	Free connection
17	Probe
18	Probe or Thermometer
20	Technical water output



SPECIFICATIONS		300*	500	800	1000	1500	2000	
Capacity	[l]	295	449	750	838	1444	1869	
Total height with insulation (H)	[mm]	1295	1720	1930	2110	2240	2380	
Tipping height *without insulation	[mm]	1525	1710*	1920*	2095*	2260*	2410*	
Diameter with insulation (Dext) without insulation (Dint)	[mm]	750 -	850 (650)	1030 (790)	1030 (790)	1240 (1000)	1340 (1100)	
Insulation	[mm]	75 (Direct PU foam)	100 (Polyester fibre)	120 (Polyester fibre)				
Energy class – Total dispersion		B 53W	C 96W	C 101W	C 106W	C 128W	C 148W	
Weight	[Kg]	69	114	169	183	277	311	
Max tank pressure	[bar]	6						
Max tank temperaure	[°C]	95°						
Max exchanger temperature	[°C]	110°						
Stainless steel serpentine tube	[m ²]	4,48 (DN32)	6,24 (DN40)	7,80 (DN40)	7,80 (DN40)	9,10 (DN40)	10,40 (DN40)	
Continuous output 10/45 with 65° tank temperature	@ 17kW	[l/h]	331	417	440	440	460	475
	@ 27kW	[l/h]	524	660	680	680	705	715
	@ 50kW	[l/h]	977	1230	1255	1255	1280	1300

QUOTAS	A	B	C	E	F	G	K	M	O	P	Q	S	T	U	Z
W-MFR-300*	140	360	610	890	-	1035	140	390	-	725	-	-	845	-	1010
W-MFR-500	240	440	820	1150	-	1420	150	490	810	-	-	1050	1170	-	1400
W-MFR-800	270	570	920	1290	-	1580	170	465	770	870	980	-	1190	1290	1390
W-MFR-1000	270	580	1130	1500	-	1760	170	495	840	950	1060	-	1330	1450	1520
W-MFR-1500	335	600	1130	1500	-	1825	235	520	875	975	1085	1305	1415	1525	1635
W-MFR-2000	350	750	1210	1470	1730	1950	250	630	970	1080	1190	1410	1520	1640	1760

COUPLINGS	1	2	3	4	5	6	7-8	10	12	13	14	16	17	18	20
	A	B	C	E	F	G	K	M	O	P	Q	S	T	U	Z
mod.300*	1" G	1/2" G	1" 1/2 G	1/2" G	-	1" G	1" 1/4 G	1/2" G	-	1" 1/2 G	-	-	1/2" G	-	1" 1/2 G
mod.500	1" 1/4 G	1/2" G	1" 1/2 G	1/2" G	-	1" 1/4 G	1" 1/4 G	1/2" G	1/2" G	-	-	1" 1/2 G	1/2" G	-	1" 1/2 G
mod.800-2000	1" 1/4 G	1/2" G	1" 1/2 G	1/2" G	1/2" G	1" 1/4 G	1" 1/2 G	1/2" G	1/2" G	1" 1/2 G	1" 1/2 G	1" 1/2 G	1/2" G	1/2" G	1" 1/2 G

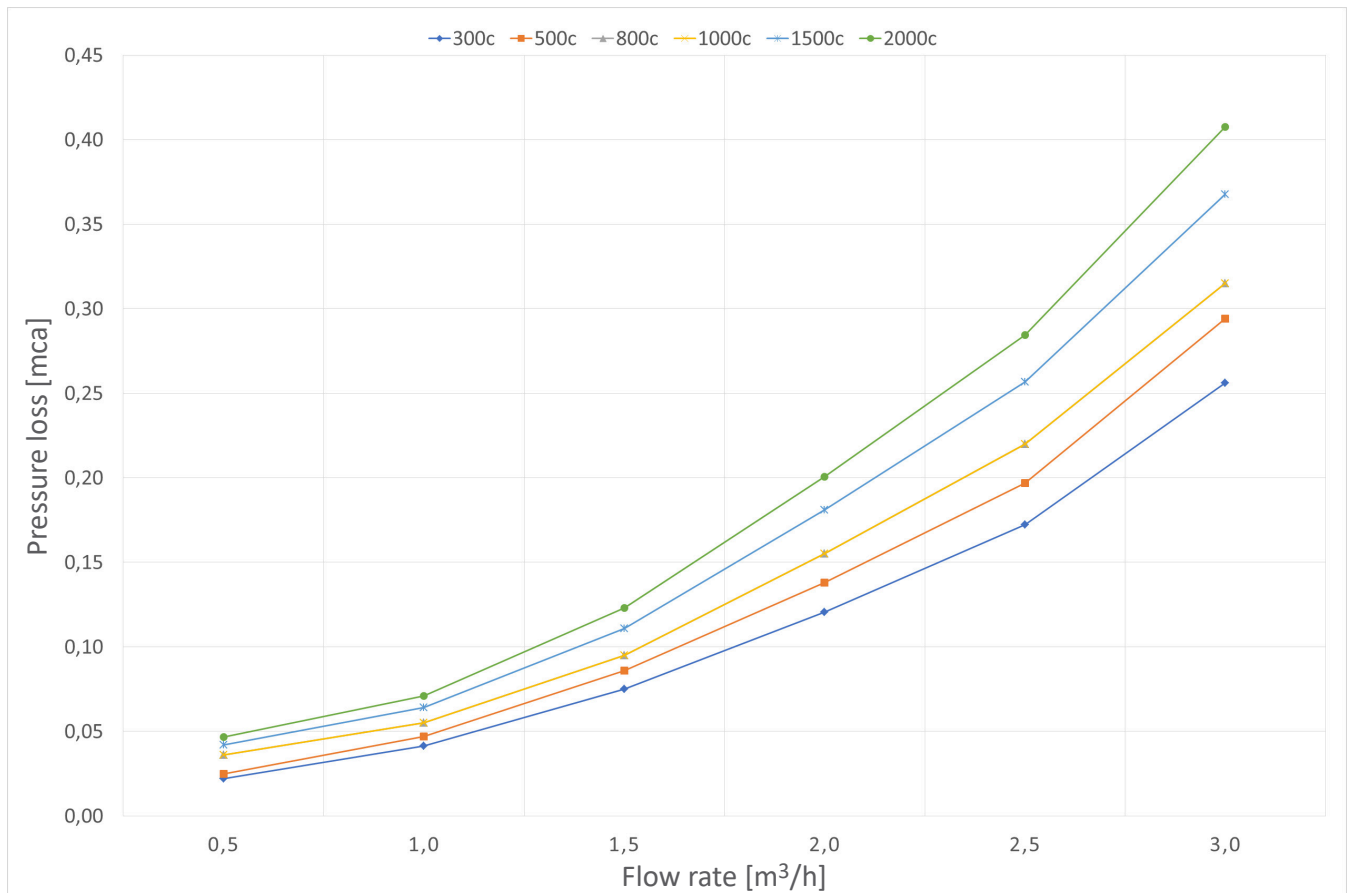
* Without internal diffuser

Combi tanks for heating and DHW – MULTIFRESH



W-MFR 300* | 500 | 800 | 1000 | 1500 | 2000

PRESSURE LOSSES DIAGRAM - CORRUGATED HOSE

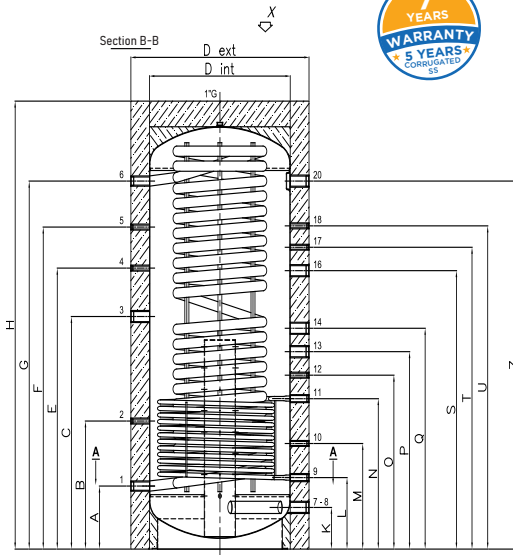


NOTE: Diagram also valid for corrugated hoses in the rest of the MULTIFRESH range (W-MFR1 and W-MFR2).

Combi tanks for heating and DHW – MULTIFRESH1

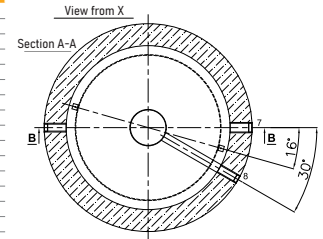


W-MFR1 300* | 500 | 800 | 1000 | 1500 | 2000



With internal diffuser for optimal stratification. Raw tanks made of S235JR carbon steel tank-in-tank type, with 1 exchanger. Possibility of inserting an electric heater on all versions. These models are used for DHW production (semi-rapid), storage and heating water production. The insulation is made of direct PU foam or polyester wadding, the exterior is made of laminated PVC jacket.

Num. Attacco	LEGENDA
1	Cold water
2	Probe
3	Resistance
4	Probe
5	Thermometer
6	Hot water
7-8	Technical water return
9	Inferior exchanger return
10	Probe
11	Inferior exchanger output
12	Probe
13	Free connection
14	Free connection
16	Free connection
17	Probe
18	Probe or Thermometer
20	Technical water output



SPECIFICATIONS		300*	500	800	1000	1500	2000	
Capacity	[l]	276	436	733	821	1426	1838	
Total height with insulation (H)	[mm]	1295	1720	1930	2110	2240	2380	
Tipping height *without insulation	[mm]	1525	1710*	1920*	2095*	2260*	2410*	
Diameter with insulation (Dext) without insulation (Dint)	[mm]	750 -	850 (650)	1030 (790)	1030 (790)	1240 (1000)	1340 (1100)	
Insulation	[mm]	75 (Direct PU foam)	100 (Polyester fibre)	120 (Polyester fibre)				
Energy class – Total dispersion		B 53W	C 98W	C 102W	C 108W	C 129W	C 149W	
Weight	[Kg]	85	142	203	217	315	373	
Max tank pressure	[bar]	6						
Max tank temperature	[°C]	95°						
Max exchanger temperature	[°C]	110°						
Exchanger surface	[m ²]	1,2	2,3	3,0	3,0	3,5	5,5	
Serpentine water content	[l]	7,1	14,6	16,6	16,6	18,8	31	
Stainless steel serpentine tube	[m ²]	4,48 (DN32)	6,24 (DN40)	7,80 (DN40)	7,80 (DN40)	9,10 (DN40)	10,40 (DN40)	
Continuous output 10/45 with 65° tank temperature	@ 17kW	[l/h]	331	417	440	440	460	475
	@ 27kW	[l/h]	524	660	680	680	705	715
	@ 50kW	[l/h]	977	1230	1255	1255	1280	1300

QUOTAS	A	B	C	E	F	G	K	L	M	N	O	P	Q	S	T	U	Z
W-MFR1-300*	140	360	610	890	-	1035	140	240	390	540	-	725	-	-	845	-	1010
W-MFR1-500	240	440	820	1150	-	1420	150	280	490	640	810	-	-	1050	1170	-	1400
W-MFR1-800	270	570	920	1290	-	1580	170	310	465	670	770	870	980	-	1190	1290	1390
W-MFR1-1000	270	580	1130	1500	-	1760	170	310	495	730	840	950	1060	-	1330	1450	1520
W-MFR1-1500	335	600	1130	1500	-	1825	235	375	520	765	875	975	1085	1305	1415	1525	1635
W-MFR1-2000	350	750	1210	1470	1730	1950	250	390	630	870	970	1080	1190	1410	1520	1640	1760

Connection no. COUPLINGS	1	2	3	4	5	6	7-8	9	10	11	12	13	14	16	17	18	20
	A	B	C	E	F	G	K	L	M	N	O	P	Q	S	T	U	Z
mod.300*	1"1/4G	1/2"1/2G	1"1/2G	1/2"1/2G	-	1"1/4G	1"1/4G	1"1/4G	1"1/2G	1"1/2G	-	1"1/2G	-	-	1/2"1/2G	-	1"1/2G
mod.500	1"1/4G	1/2"1/2G	1"1/2G	1/2"1/2G	-	1"1/4G	1"1/4G	1"1/4G	1"1/2G	1"1/2G	1"1/2G	-	-	1"1/2G	1/2"1/2G	-	1"1/2G
mod.800-2000	1"1/4G	1/2"1/2G	1"1/2G	1/2"1/2G	1/2"1/2G	1"1/4G	1"1/2G	1"1/4G	1"1/2G	1"1/2G	1"1/2G	1"1/2G	1"1/2G	1"1/2G	1"1/2G	1"1/2G	1"1/2G

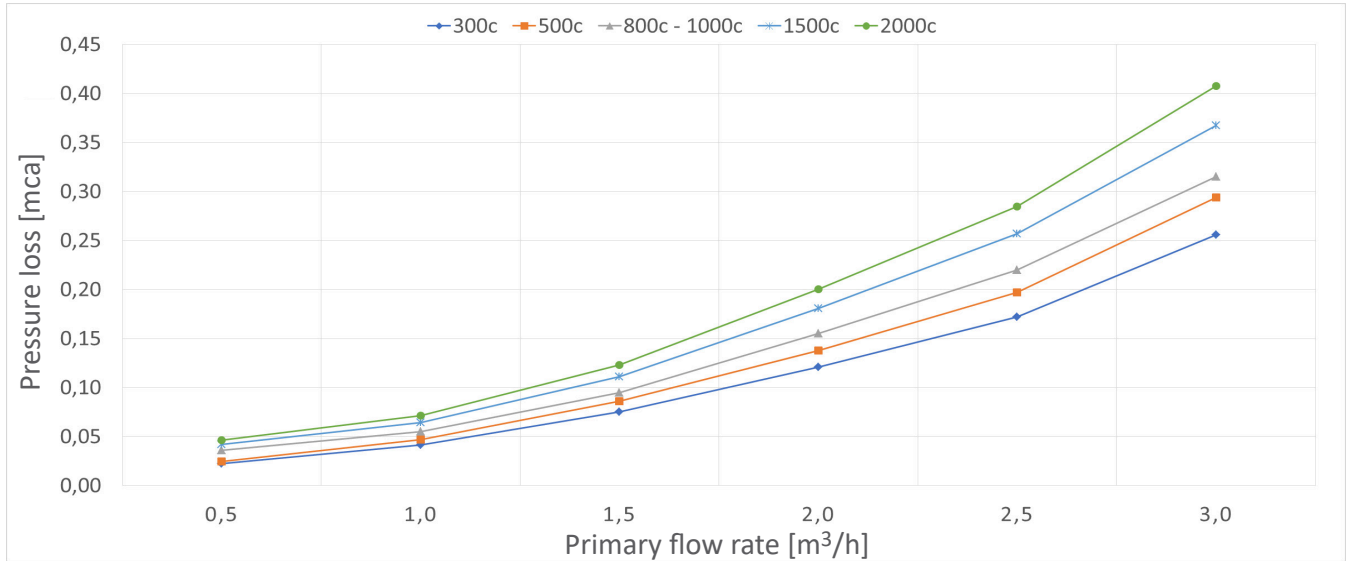
* Without internal diffuser

Combi tanks for heating and DHW - MULTIFRESH₁

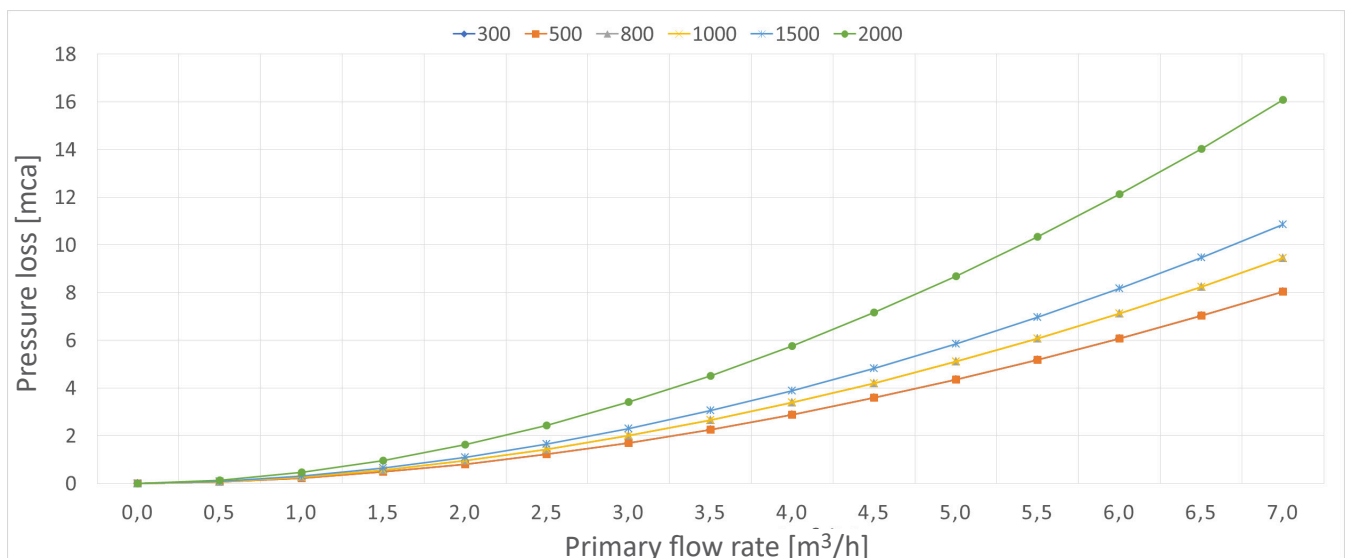


W-MFR₁ 300* | 500 | 800 | 1000 | 1500 | 2000

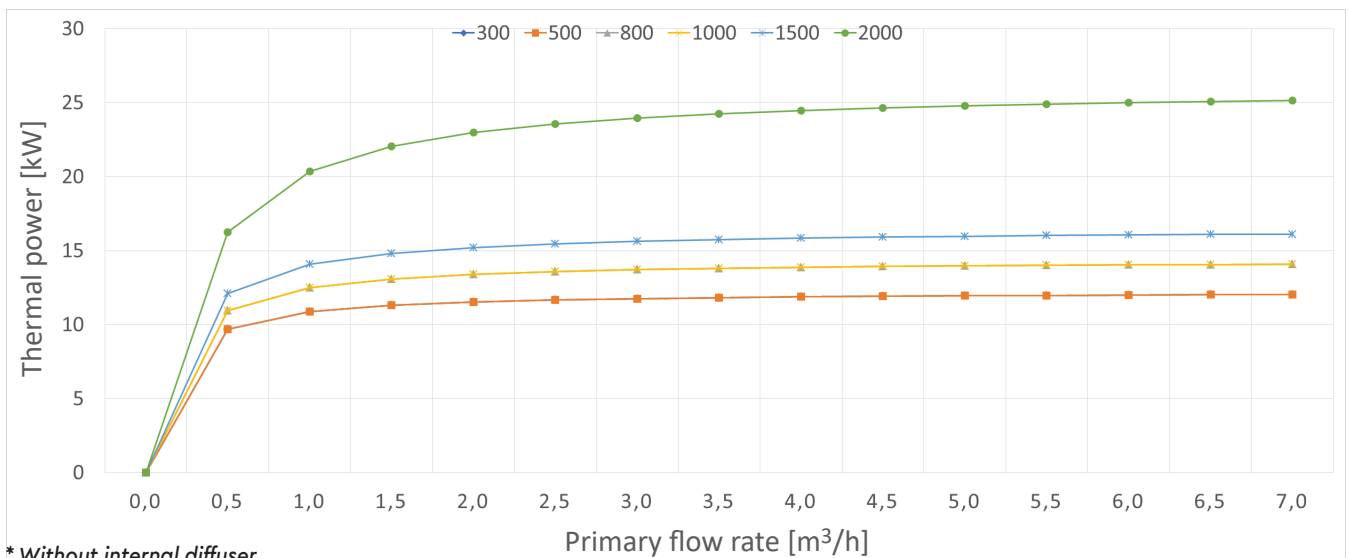
PRESSURE LOSSES DIAGRAM - CORRUGATED HOSE



PRESSURE LOSSES DIAGRAM - SERPENTINE



THERMAL PERFORMANCE DIAGRAM - SERPENTINE

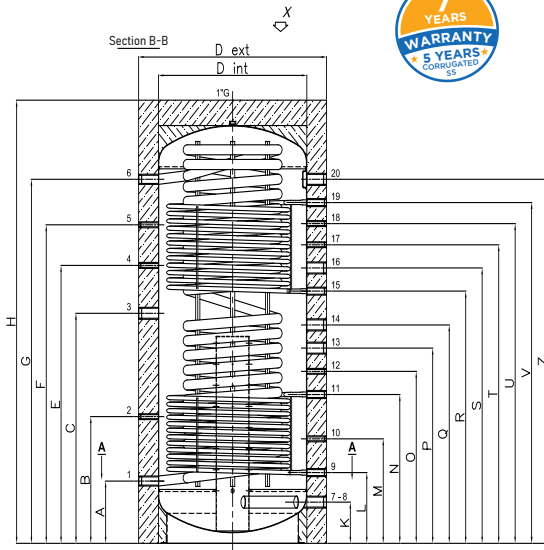


* Without internal diffuser

Combi tanks for heating and DHW – MULTIFRESH2



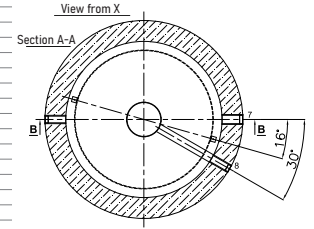
W-MFR2 500 | 800 | 1000 | 1500 | 2000



With internal diffuser for optimal stratification.
Raw tanks made of S235JR carbon steel tank-in-tank type, with 2 exchangers.
Possibility of inserting an electric heater on all versions.

These models are used for DHW production (semi-rapid), storage and heating water production.
The insulation is made of polyester wadding, the exterior is made of laminated PVC jacket.

Num. Attacco	LEGENDA
1	Cold water
2	Probe
3	Resistance
4	Probe
5	Thermometer
6	hot water
7-8	Technical water return
9	Inferior exchanger return
10	Probe
11	Inferior exchanger output
12	Probe
13	Free connection
14	Free connection
15	Superior exchanger return
16	Free connection
17	Probe
18	Probe or Thermometer
19	Superior exchanger output
20	Technical water output



SPECIFICATIONS		500	800	1000	1500	2000	
Capacity	[l]	421	723	804	1405	1812	
Total height with insulation (H)	[mm]	1720	1930	2110	2240	2380	
Tipping height *without insulation	[mm]	1710*	1920*	2095*	2260*	2410*	
Diameter with insulation (De) without insulation (Di)	[mm]	850 (650)	1030 (790)	1030 (790)	1240 (1000)	1340 (1100)	
Insulation	[mm]	100 (Polyester fibre)		120 (Polyester fibre)			
Energy class – Total dispersion		C 99W	C 103W	C 109W	C 130W	C 150W	
Weight	[Kg]	170	225	260	358	425	
Max tank pressure	[bar]	6					
Max tank temperature	[°C]	95°					
Max exchanger temperature	[°C]	110°					
Exchanger surface	sup.	[m ²]	2,3	2,0	3,0	3,5	4,2
	inf.		2,3	3,0	3,0	3,0	5,5
Serpentine water content	sup.	[l]	14,6	11,1	16,6	21	25,3
	inf.		14,6	16,6	16,6	16,6	31
Stainless steel serpentine tube DN40	[m ²]	6,24	7,80	7,80	9,10	10,40	
Continuous output 10/45 with 65° tank temperature	@ 17kW	[l/h]	417	440	440	460	475
	@ 27kW	[l/h]	660	680	680	705	715
	@ 50kW	[l/h]	1230	1255	1255	1280	1300

QUOTAS	A	B	C	E	F	G	K	L	M	N	O	P	Q	R	S	T	U	V	Z
W-MFR2-500	240	440	820	1150	-	1420	150	280	490	640	810	-	-	930	1050	1170	-	1290	1400
W-MFR2-800	270	570	920	1290	-	1580	170	310	465	670	770	870	980	1090	-	1190	1290	1500	1390
W-MFR2-1000	270	580	1130	1500	-	1760	170	310	495	730	840	950	1060	1210	-	1330	1450	1680	1520
W-MFR2-1500	335	600	1130	1500	-	1825	235	375	520	765	875	975	1085	1195	1305	1415	1525	1745	1635
W-MFR2-2000	350	750	1210	1470	1730	1950	250	390	630	870	970	1080	1190	1300	1410	1520	1640	1870	1760

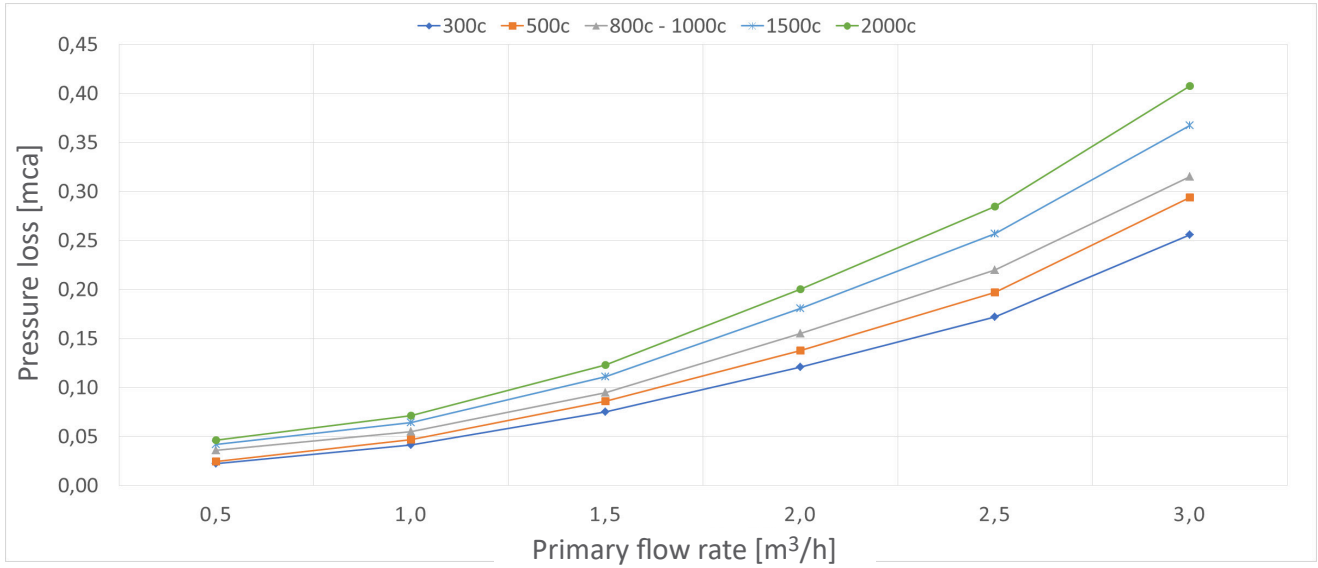
Connection no. COUPLINGS	1	2	3	4	5	6	7-8	9	10	11	12	13	14	15	16	17	18	19	20
	A	B	C	E	F	G	K	L	M	N	O	P	Q	R	S	T	U	V	Z
mod.500	1"1/4G	1/2"G	1"1/2G	1/2"G	-	1"1/4G	1"1/4G	1"G	1/2"G	1"G	1/2"G	-	-	1"G	1"1/2G	1/2"G	-	1"G	1"1/2G
mod.800-2000	1"1/4G	1/2"G	1"1/2G	1/2"G	1/2"G	1"1/4G	1"1/2G	1"G	1/2"G	1"G	1/2"G	1"1/2G	1"1/2G	1"G	1"1/2G	1/2"G	1/2"G	1"G	1"1/2G

Combi tanks for heating and DHW - MULTIFRESH2

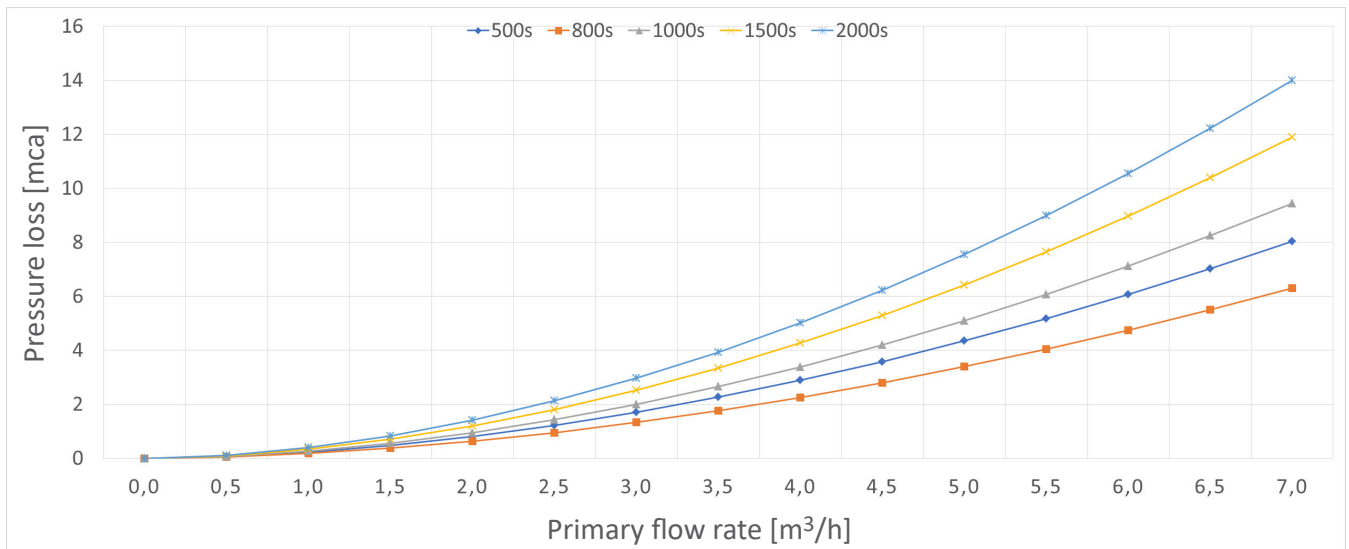


W-MFR2 500 | 800 | 1000 | 1500 | 2000

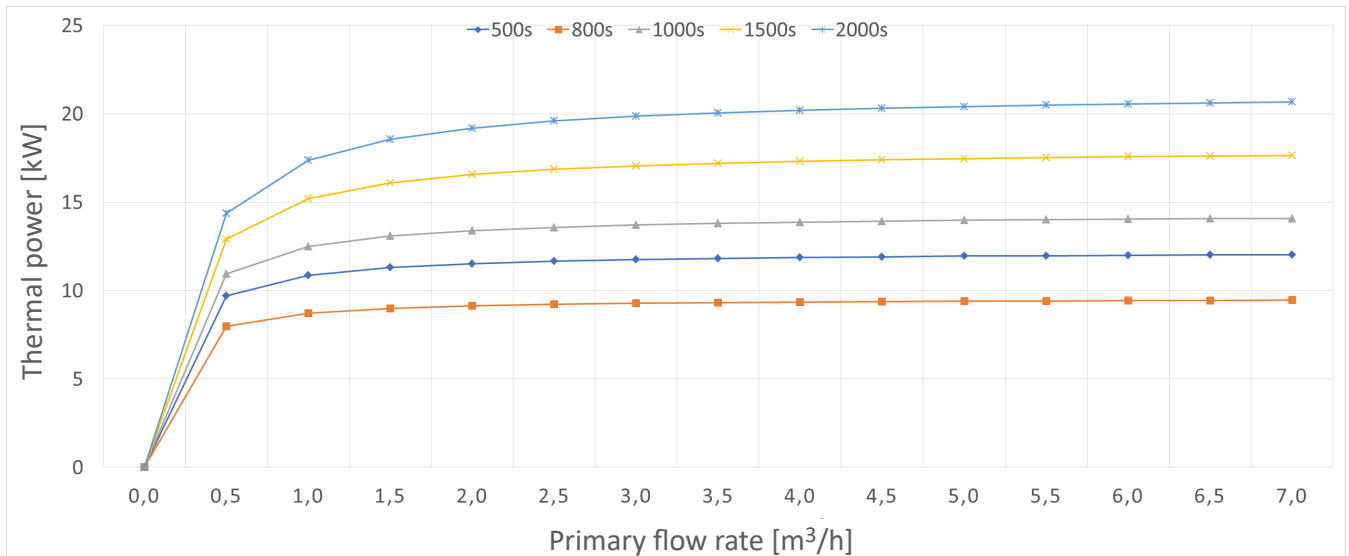
PRESSURE LOSSES DIAGRAM - CORRUGATED HOSEL



PRESSURE LOSSES DIAGRAM - UPPER SERPENTINE



THERMAL PERFORMANCE DIAGRAM - UPPER SERPENTINE

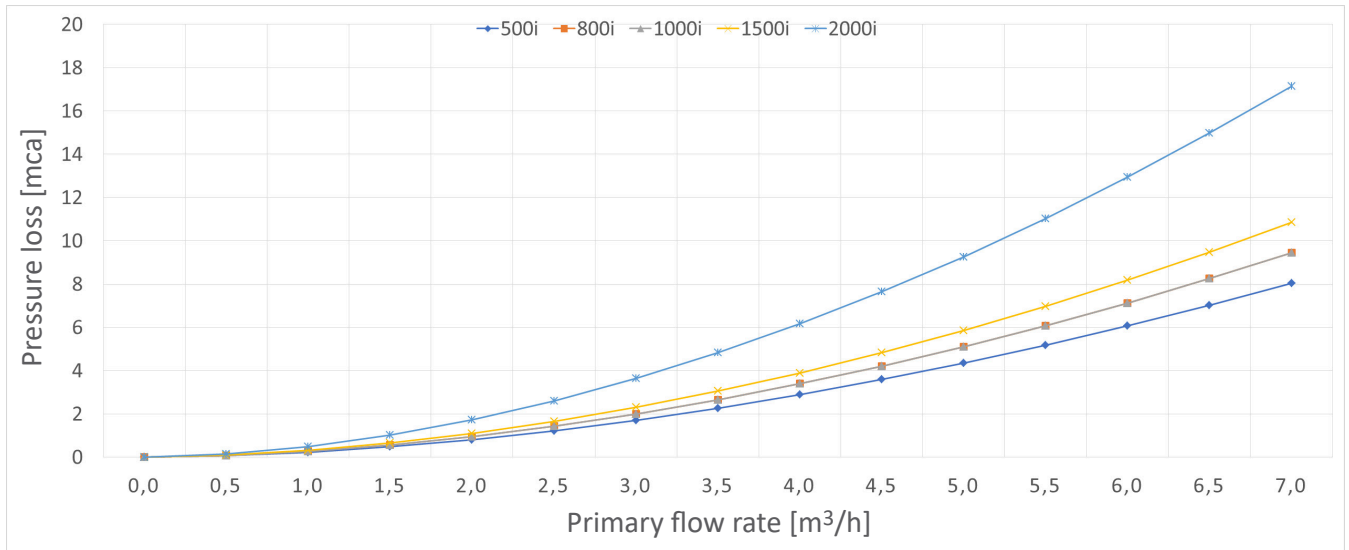


Combi tanks for heating and DHW – MULTIFRESH2



W-MFR2 500 | 800 | 1000 | 1500 | 2000

PRESSURE LOSSES DIAGRAM - LOWER SERPENTINE



THERMAL PERFORMANCE DIAGRAM - LOWER SERPENTINE

