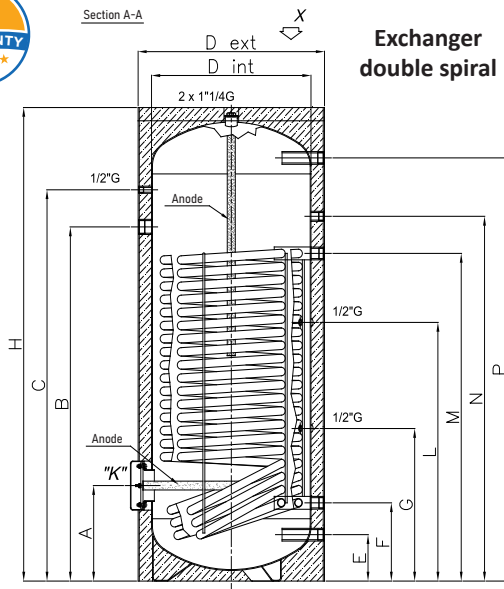


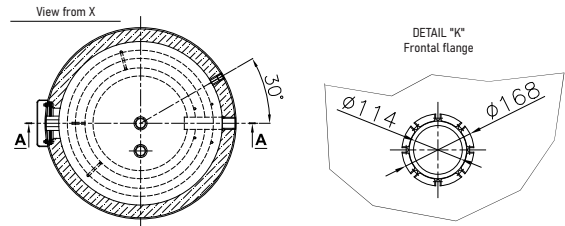
Oversized heat exchanger boilers for heat pumps – CALOR HP1



W-CAL1 200HP | 300HP | 400HP | 500HP | 800HP | 1000HP | 1500HP | 2000HP



Tanks made of S235JR carbon steel with enamelling treatment, protected by a layer of long-lasting porcelain enamel, with 1 exchanger and inspection flange. Possibility of inserting an electrical heating element on all versions. These models are used for DHW production with solar energy, boiler or heat pump. Enamelling and sizing of the magnesium anodes (supplied as standard) are carried out in accordance with DIN 4753 p.3. The exterior is made of laminated PVC jacket.



SPECIFICATIONS		200	300	400	500	800	1000	1500	2000
Capacity	[l]	188	272	375	475	716	821	1424	1930
Total height with insulation (H)	[mm]	1265	1710	1655	1785	1845	2095	2285	2550
Tipping height *without insulation	[mm]	1435	1850	1865	1970	1890*	2115*	2325*	2595*
Diameter with insulation (Dext) without insulation (Dint)	[mm]	605 -	605 -	705 -	755 -	950 (790)	950 (790)	1200 (1000)	1300 (1100)
Insulation	[mm]	50 (Direct PU foam)				75 (rigid PU shells)		100 (Polyester fibre)	
Energy class – Total dispersion		C 66W	C 82W	C 95W	C 102W	C 106W	C 123W	C 154W	C 183W
Weight	[Kg]	105	130	162	230	273	400	495	530
Max boiler pressure	[bar]	10							
Max boiler temperature	[°C]	95°							
Max exchanger temperature	[°C]	110°							
Exchanger surface (double spiral)	[m ²]	3,0	3,8	5,0	5,9	7,5	10,0	11,0	12,0
Serpentine water content	[l]	22,8	24,4	31,65	36,7	48,11	63,2	70,0	76,6

QUOTAS	A	B	C	E	F	G	L	M	N	P
W-CAL1-200HP	257	940	1040	67	210	-	593	890	990	1164
W-CAL1-300HP	270	1150	1430	67	230	-	653	1080	1200	1609
W-CAL1-400HP	280	1165	1385	79	250	-	690	1100	1205	1541
W-CAL1-500HP	360	1335	1475	175	295	-	825	1235	1375	1595
W-CAL1-800HP	400	1300	1450	220	370	-	775	1250	1140	1590
W-CAL1-1000HP	400	-	1730	220	345	542	1193	1695	1235	1840
W-CAL1-1500HP	530	-	1825	315	450	870	1260	1620	1460	1935
W-CAL1-2000HP	565	-	2090	340	485	905	1295	1655	1495	2210

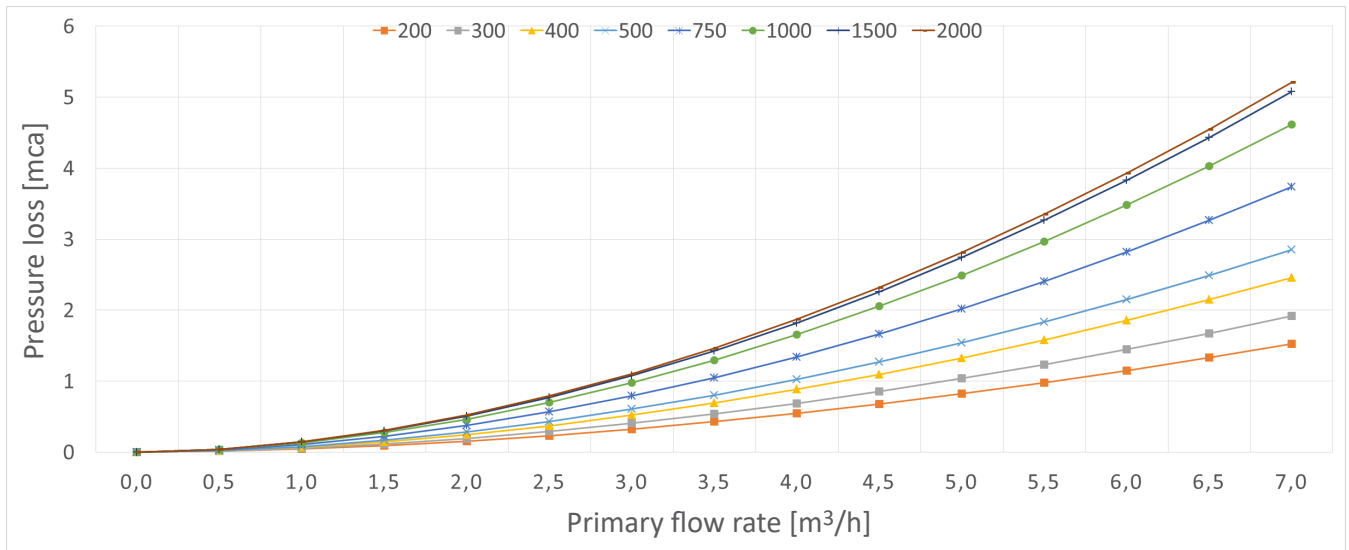
COUPLINGS	Electrical resistance	Thermo- meter	Cold water inlet	Heat pumps return	Probe	Probe	Heating output	Recircu- lation	Hot water
	B	C	E	F	G	L	M	N	P
mod.200÷400	1" 1/2 G	1/2" G	1" G	1" 1/4 G	-	1/2" G	1" 1/4 G	3/4" G	1" G
mod.500	1" 1/2 G	1/2" G	1" 1/4 G	1" 1/4 G	-	1/2" G	1" 1/4 G	1" G	1" 1/4 G
mod.800	1" 1/2 G	1/2" G	1" 1/4 G	1" 1/2 G	-	1/2" G	1" 1/2 G	1" G	1" 1/4 G
mod.1000	1" 1/2 G	1/2" G	1" 1/4 G	1" 1/2 G	1/2" G	1/2" G	1" 1/2 G	1" G	1" 1/4 G
mod.1500÷2000	1" 1/2 G	1/2" G	2" G	1" 1/2 G	1/2" G	1/2" G	1" 1/2 G	1" 1/4 G	2" G

Oversized heat exchanger boilers for heat pumps – CALOR HP1

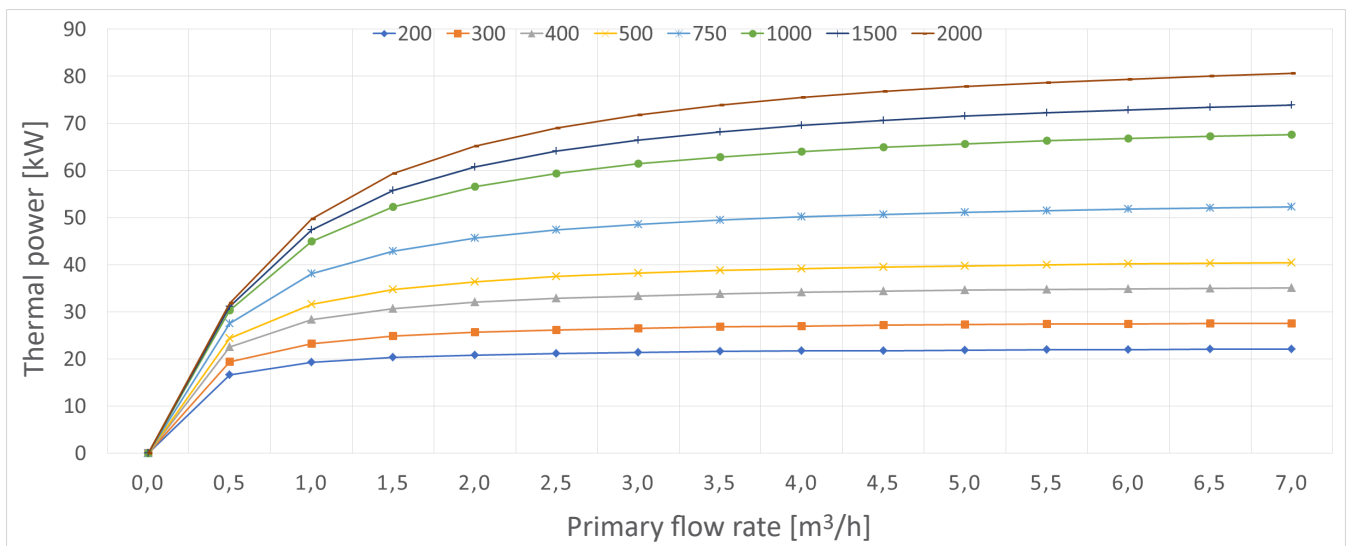


W-CAL1 200HP | 300HP | 400HP | 500HP | 800HP | 1000HP | 1500HP | 2000HP

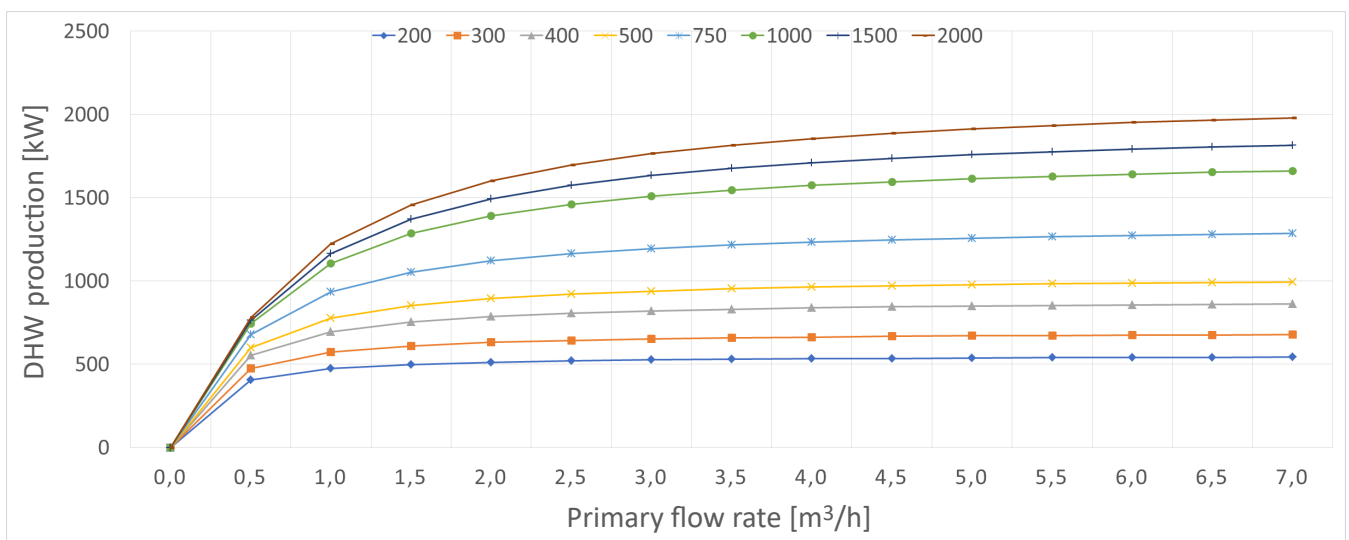
PRESSURE LOSSES DIAGRAM (DOUBLE SPIRAL SERPENTINE)



THERMAL PERFORMANCE DIAGRAM (DOUBLE SPIRAL SERPENTINE)



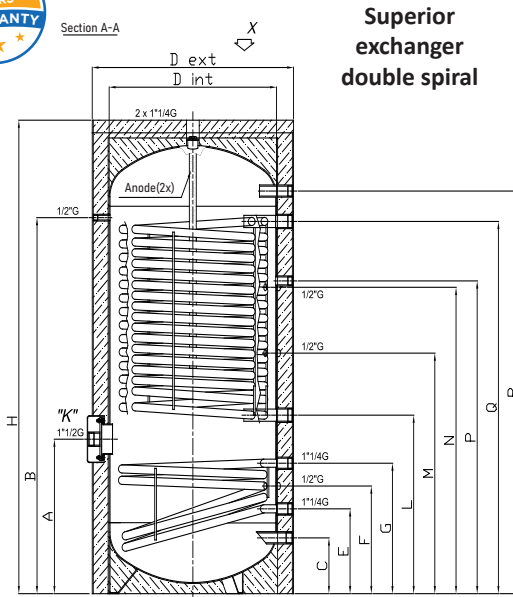
DHW PRODUCTION (DOUBLE SPIRAL SERPENTINE)



Oversized heat exchanger boilers for heat pumps – CALOR HP2



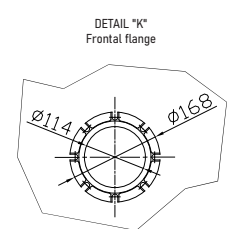
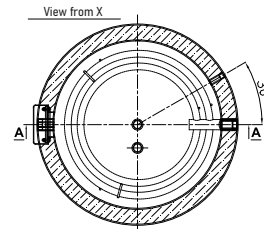
W-CAL2 200HP | 400HP | 500HP | 800HP | 1000HP



**Superior
exchanger
double spiral**

Tanks made of S235JR carbon steel with enamelling treatment, protected by a layer of long-lasting porcelain enamel, with 2 exchangers and inspection flange. Possibility of inserting an electrical heating element on all versions. These models are used for DHW production with solar energy, boiler or heat pump. Enamelling and sizing of the magnesium anodes (supplied as standard) are carried out in accordance with DIN 4753 p.3.

The exterior is made of laminated PVC jacket.



SPECIFICATIONS		300	400	500	800	1000	
Capacity	[l]	263	416	471	720	833	
Total height with insulation (H)	[mm]	1710	1580	1785	1845	2095	
Tipping height *without insulation	[mm]	1850	1784	1970	1890*	2115*	
Diameter with insulation (De) without insulation (Di)	[mm]	605	755	755	950 (790)	950 (790)	
Insulation	[mm]	50 (Direct PU foam)			75 (rigid PU shells)		
Energy class – Total dispersion		C 83W	C 94W	C 103W	C 114W	C 124W	
Weight	[Kg]	146	177	215	285	335	
Max boiler pressure	[bar]	10					
Max boiler temperature	[°C]	95°					
Max exchanger temperature	[°C]	110°					
Exchanger surface (*double spiral)	sup.	[m ²]	3,8**	4,6**	5,5**	6,0**	6,0**
	inf.		1,2**	0,9	0,9	0,9	2,0
Serpentine water content	sup.	[l]	24,4	25,4	34,9	38	38
	inf.		8,3	5,7	5,7	5,7	12,7

QUOTAS	A	B	C	E	F	G	L	M	N	P	Q	R
W-CAL2-300HP	550	1430	67	225	400	490	610	890	1180	1140	1460	1609
W-CAL2-400HP	565	1295	175	295	395	505	625	845	1065	1035	1275	1395
W-CAL2-500HP	565	1495	175	295	395	505	625	910	1195	1235	1475	1595
W-CAL2-800HP	610	1485	220	335	425	515	705	950	1210	1235	1470	1590
W-CAL2-1000HP	800	1735	220	335	590	715	930	1175	1435	1390	1695	1840

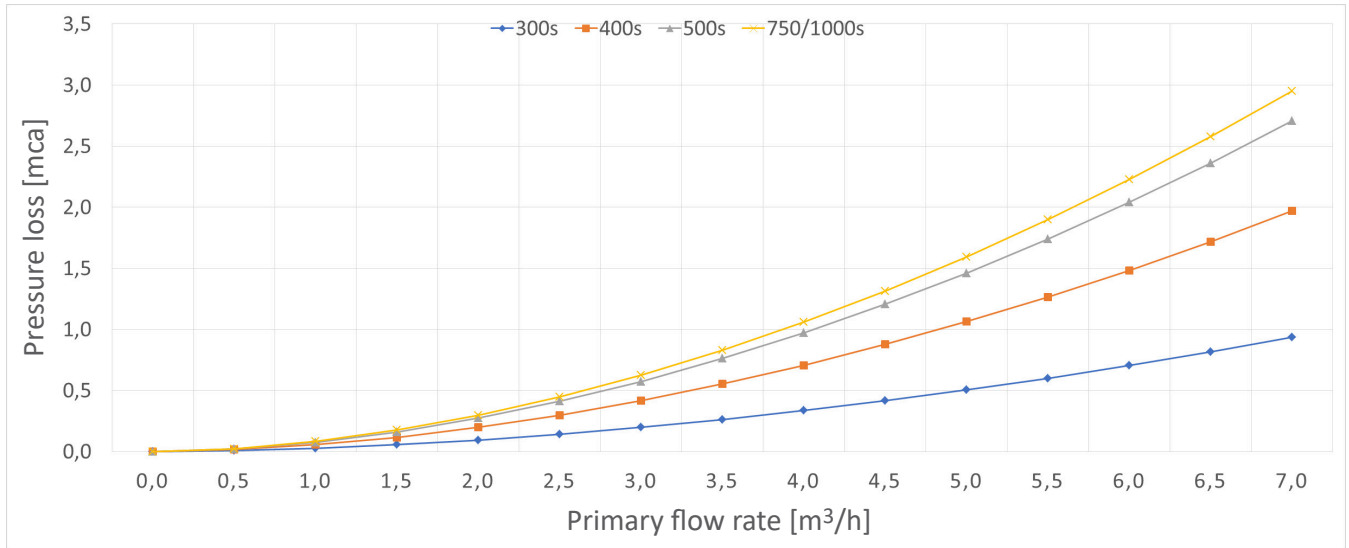
COUPLINGS	Flange – Electrical resistance	Thermo- meter	Cold water	Solar circuit return	Solar circuit Probe	Solar circuit output	Heat pump return	Probe	Recircu- lation	Heat pump output	Hot water
	A	B	C	E	F	G	L	M – N	P	Q	R
mod.300	1" 1/2 G	1/2" G	1" G	1" 1/4 G	1/2" G	1" 1/4 G	1" 1/4 G	1/2" G	3/4" G	1" 1/4 G	1" G
mod.400÷500	1" 1/2 G	1/2" G	1" 1/4 G	1" 1/4 G	1/2" G	1" 1/4 G	1" 1/4 G	1/2" G	1" G	1" 1/4 G	1" 1/4 G
mod.800÷1000	1" 1/2 G	1/2" G	1" 1/4 G	1" 1/4 G	1/2" G	1" 1/4 G	1" 1/2 G	1/2" G	1" G	1" 1/2 G	1" 1/4 G

Oversized heat exchanger boilers for heat pumps – CALOR HP2

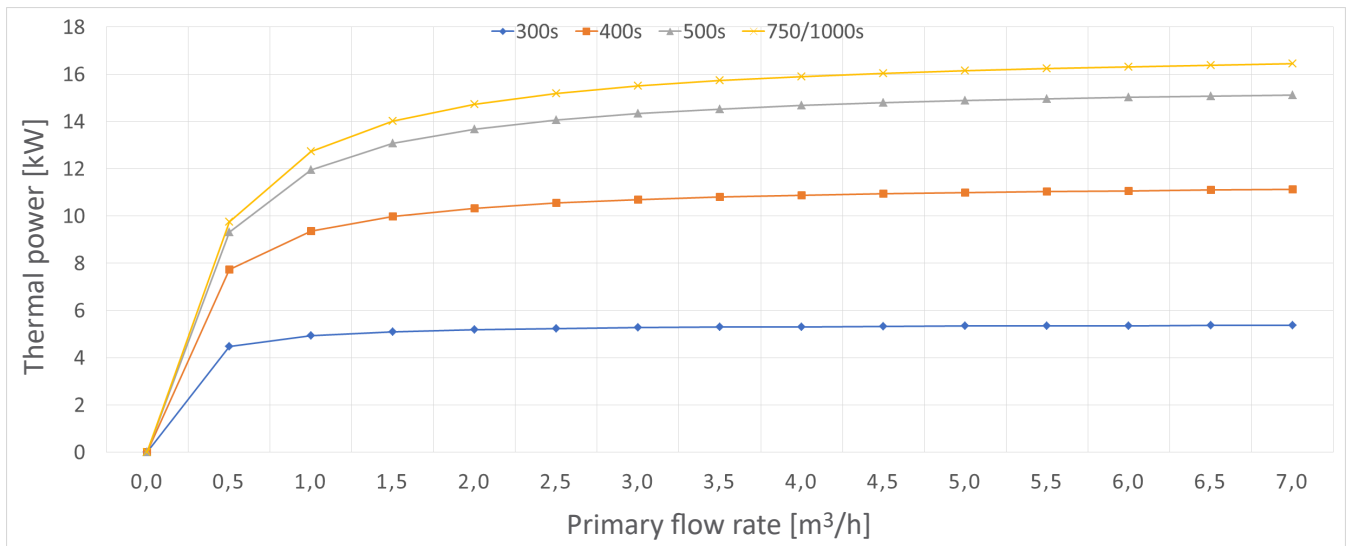


W-CAL2 200HP | 400HP | 500HP | 800HP | 1000HP

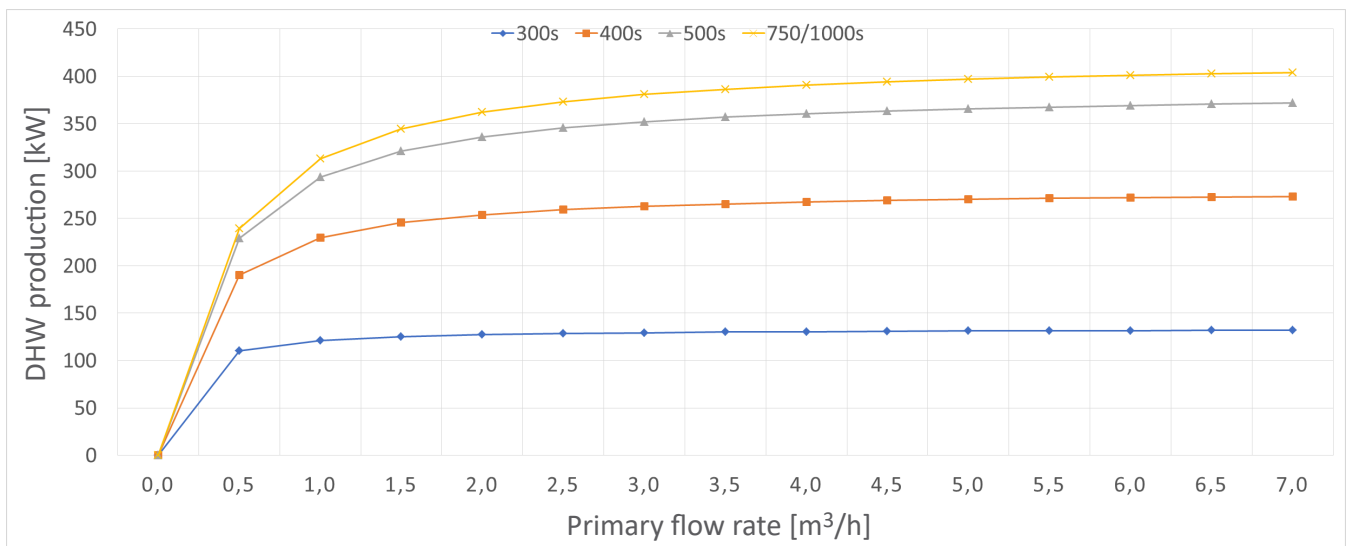
PRESSURE LOSSES DIAGRAM - UPPER SERPENTINE (WITH DOUBLE SPIRAL)



THERMAL PERFORMANCE DIAGRAM - UPPER SERPENTINE (WITH DOUBLE SPIRAL)



DHW PRODUCTION - UPPER SERPENTINE (WITH DOUBLE SPIRAL)

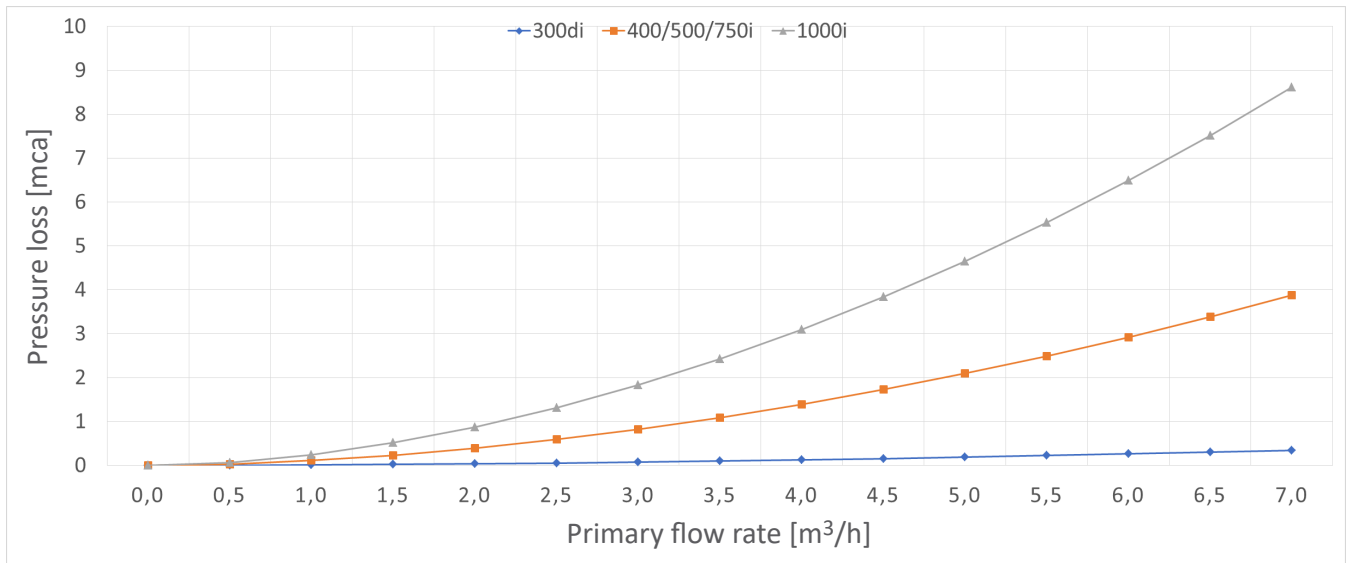


Oversized heat exchanger boilers for heat pumps – CALOR HP2

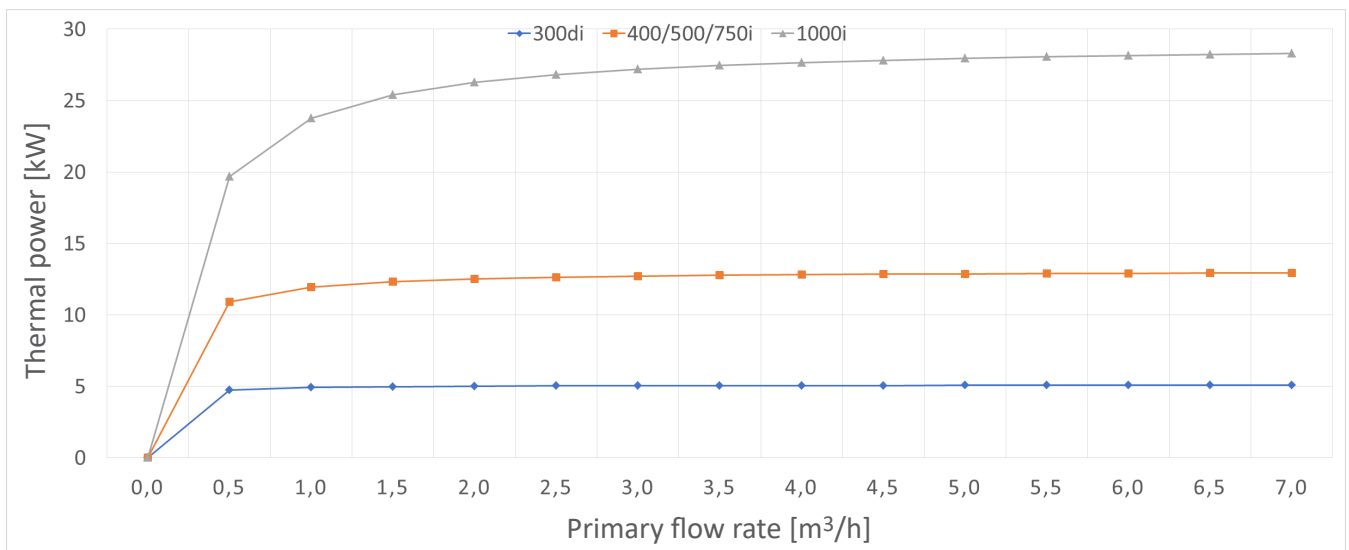


W-CAL2 200HP | 400HP | 500HP | 800HP | 1000HP

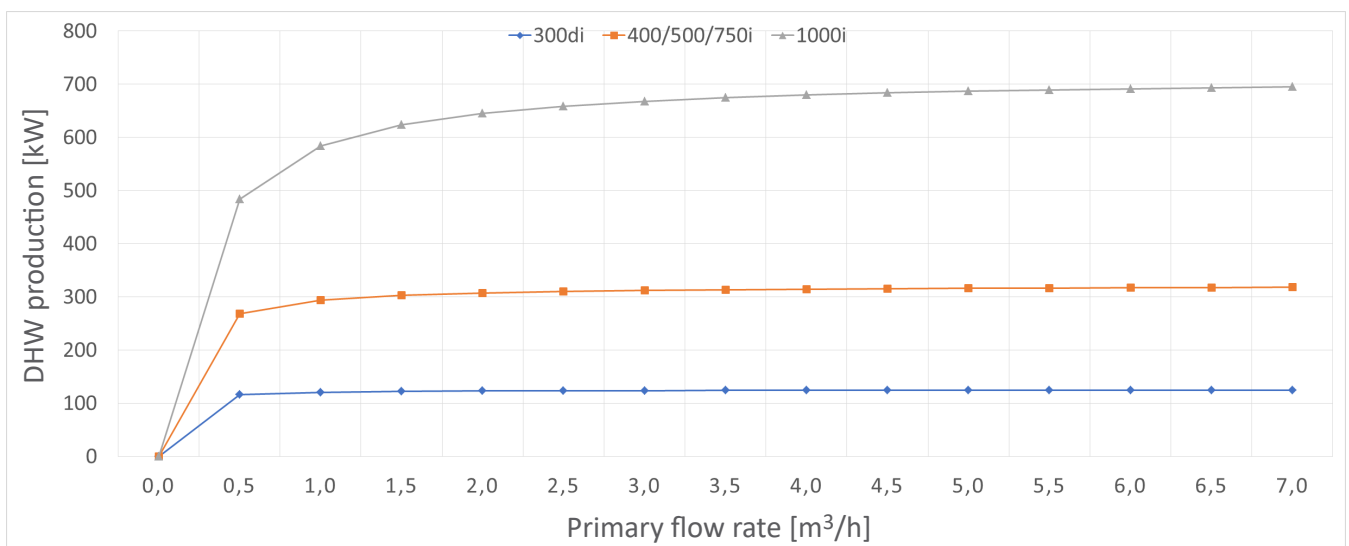
PRESSURE LOSSES DIAGRAM - LOWER SERPENTINE (MODEL 300LT WITH DOUBLE SPIRAL)



THERMAL PERFORMANCE DIAGRAM - LOWER SERPENTINE (MODEL 300LT WITH DOUBLE SPIRAL)

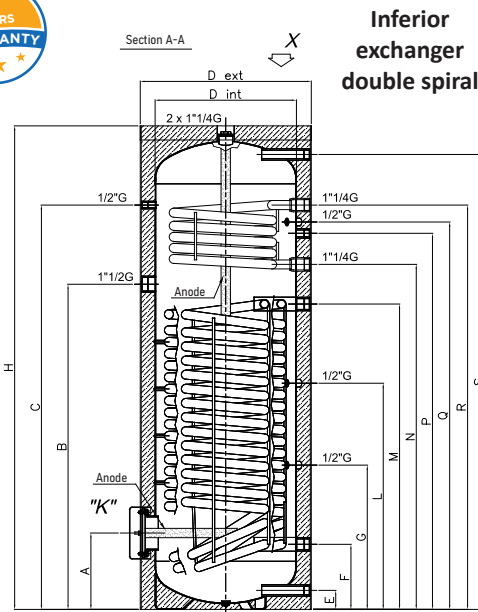


DHW PRODUCTION - LOWER SERPENTINE (MODEL 300LT WITH DOUBLE SPIRAL)



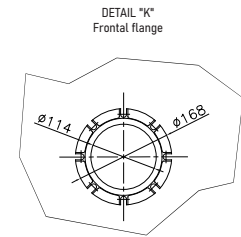
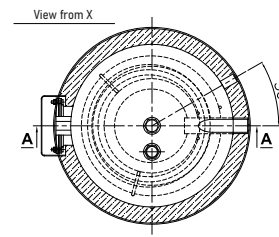
Oversized heat exchanger boilers for heat pumps – CALOR REVERSO

W-CAL2 300R | 400R | 500R | 800R | 1000R



Inferior exchanger double spiral

Tanks made of S235JR carbon steel with enamelling treatment, protected by a layer of long-lasting porcelain enamel, with 2 exchangers (reversed position compared to Model CALOR HP) and inspection flange. Possibility of inserting an electrical heating element on all versions. These models are used for DHW production with solar energy, boiler or heat pump. Enamelling and sizing of the magnesium anodes (supplied as standard) are carried out in accordance with DIN 4753 p.3. The exterior is made of laminated PVC jacket.



SPECIFICATIONS		300	400	500	800	1000	
Capacity	[l]	267	416	471	720	833	
Total height with insulation (H)	[mm]	1710	1580	1785	1845	2095	
Tipping height *without insulation	[mm]	1850	1784	1970	1890*	2115*	
Diameter with insulation (De) without insulation (Di)	[mm]	605 -	755 -	755 -	950 (790)	950 (790)	
Insulation	[mm]	50 (Direct PU foam)			75 (rigid PU shells)		
Energy class – Total dispersion		C 85W	C 96W	C 105W	C 116W	C 126W	
Weight	[Kg]	137	175	210	285	325	
Max boiler pressure	[bar]	10					
Max boiler temperature	[°C]	95°					
Max exchanger temperature	[°C]	110°					
Exchanger surface	sup.	[m ²]	0,6	0,9	0,9	0,9	2,0
	inf.		3,8	4,6	5,5	6,0	6,0
Serpentine water content	sup.	[l]	3,8	5,7	5,7	6,4	12,7
	inf.		24,4	25,4	35,8	38	38

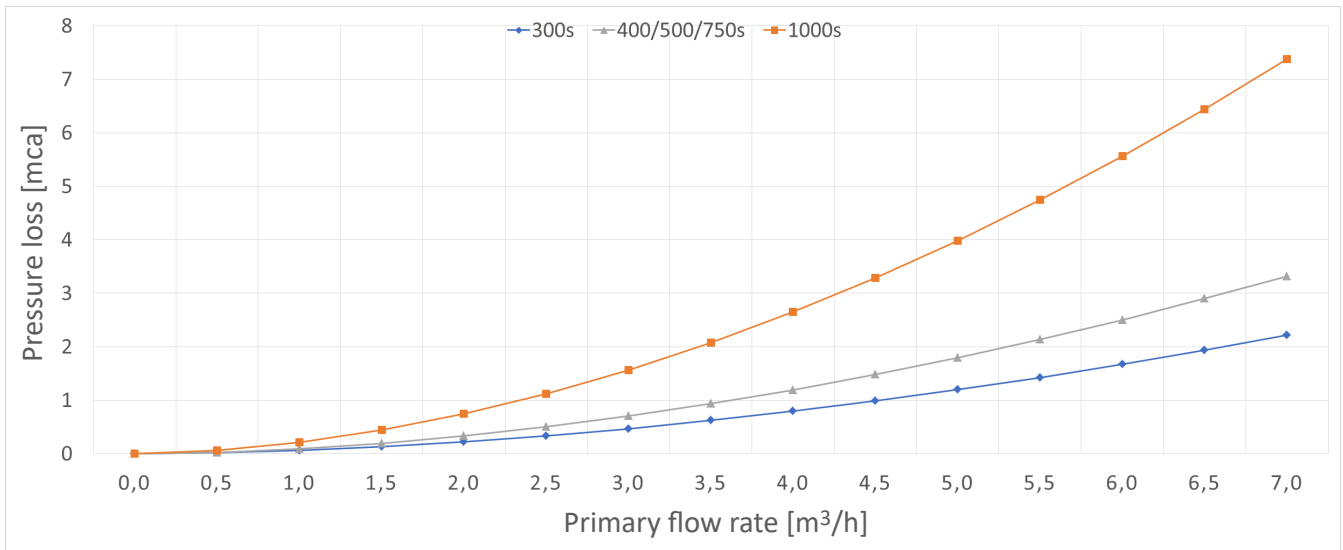
QUOTAS	A	B	C	E	F	G	L	M	N	P	Q	R	S
W-CAL2-300R	270	1150	1430	67	295	230	800	1080	1220	1330	1370	1430	1609
W-CAL2-400R	360	950	1295	175	295	490	690	885	1035	1140	1175	1245	1395
W-CAL2-500R	380	1205	1495	175	295	575	865	1130	1265	1370	1405	1475	1595
W-CAL2-800R	390	1175	1485	220	335	590	845	1100	1250	1360	1395	1470	1590
W-CAL2-1000R	390	1175	1735	220	335	590	845	1100	1315	1505	1570	1695	1840

COUPLINGS	Flange	Electrical resistance	Thermometer	Cold water	Heat pump return	Probe	Heat pump output	Return	Recirculation	Probe	Output	Hot water
	A	B	C	E	F	G-L	M	N	P	Q	R	S
mod.300	-	1" 1/2 G	1/2" G	1" G	1" 1/4 G	1/2" G	1" 1/4 G	1" 1/4 G	3/4" G	1/2" G	1" 1/4 G	1" G
mod.400÷500	-	1" 1/2 G	1/2" G	1" 1/4 G	1" 1/4 G	1/2" G	1" 1/4 G	1" 1/4 G	1" G	1/2" G	1" 1/4 G	1" 1/4 G
mod.800÷1000	-	1" 1/2 G	1/2" G	1" 1/4 G	1" 1/2 G	1/2" G	1" 1/2 G	1" 1/4 G	1" G	1/2" G	1" 1/4 G	1" 1/4 G

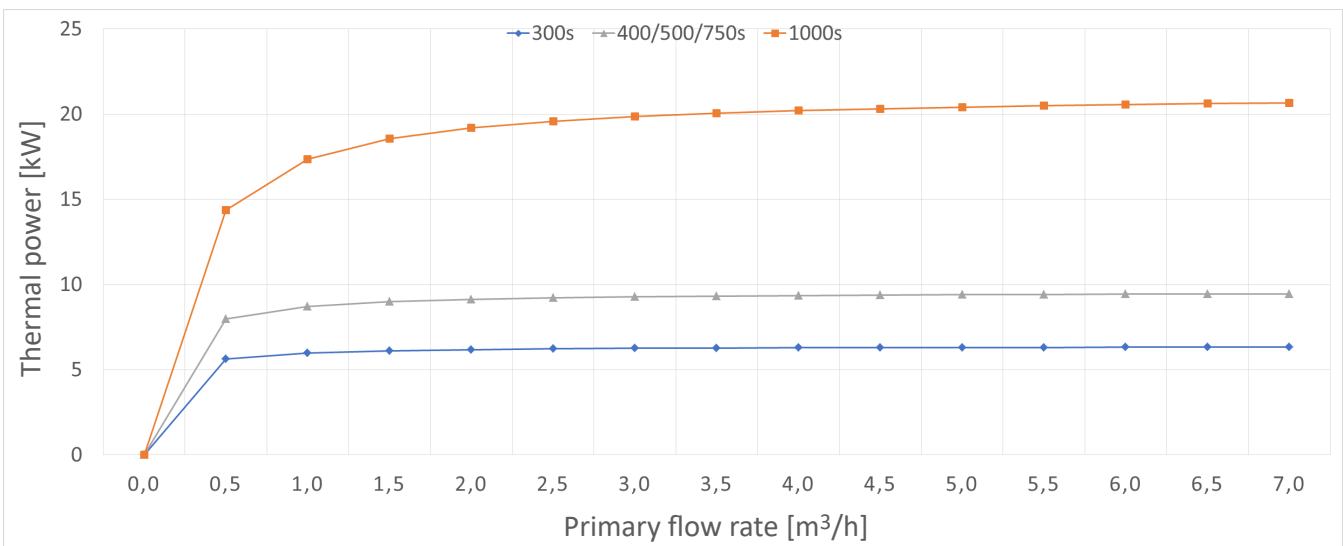
Oversized heat exchanger boilers for heat pumps – CALOR REVERSO

W-CAL2 300R | 400R | 500R | 800R | 1000R

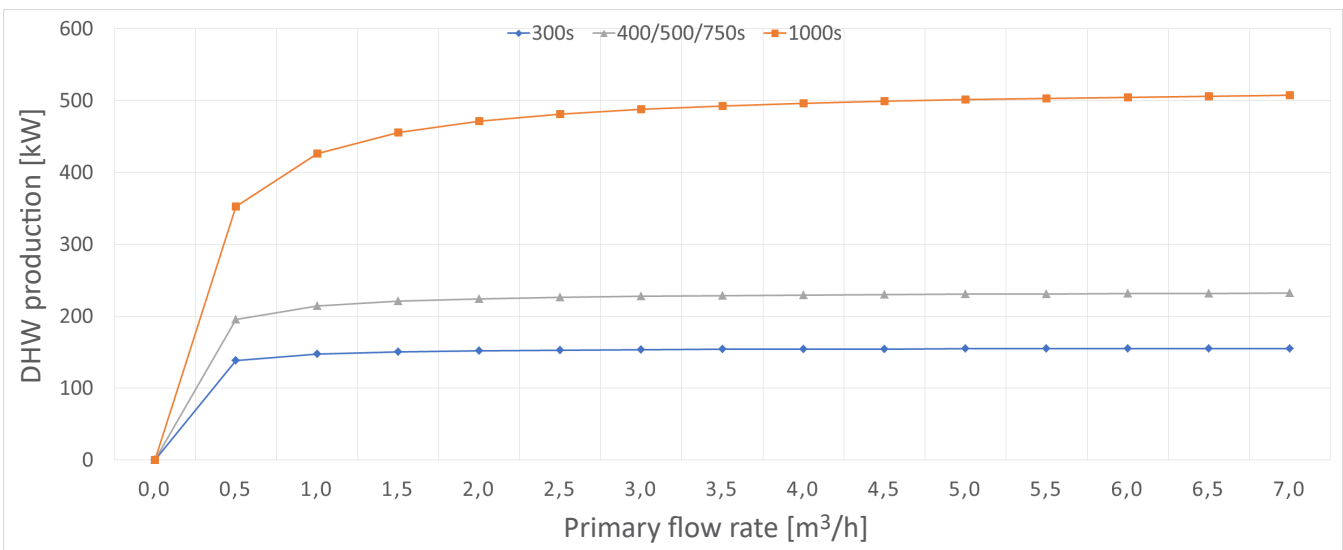
PRESSURE LOSSES DIAGRAM - UPPER SERPENTINE



THERMAL PERFORMANCE DIAGRAM - UPPER SERPENTINE



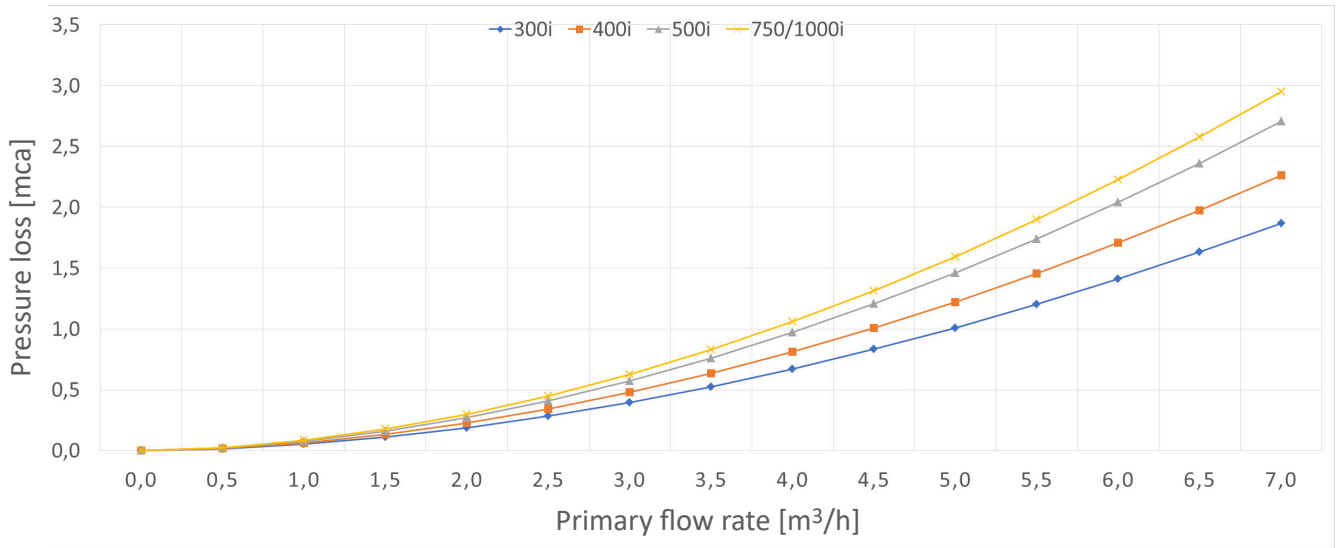
DHW PRODUCTION - UPPER SERPENTINE



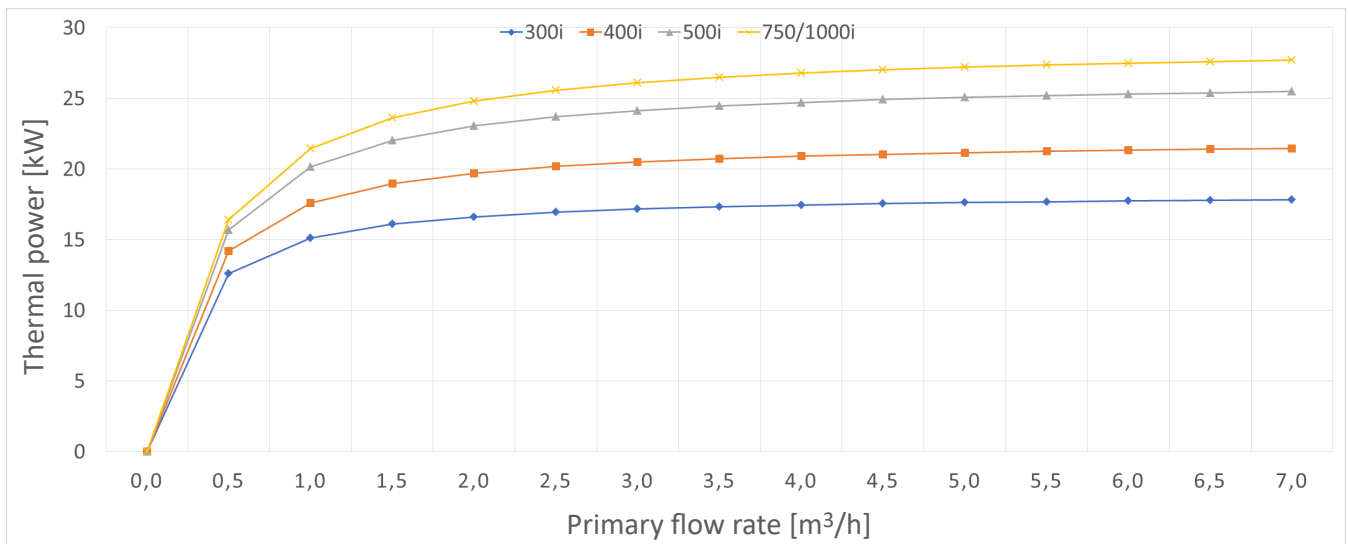
Oversized heat exchanger boilers for heat pumps – CALOR REVERSO

W-CAL2 300R | 400R | 500R | 800R | 1000R

PRESSURE LOSSES DIAGRAM - LOWER SERPENTINE (WITH DOUBLE SPIRAL)



THERMAL PERFORMANCE DIAGRAM - LOWER SERPENTINE (WITH DOUBLE SPIRAL)



DHW PRODUCTION - LOWER SERPENTINE (WITH DOUBLE SPIRAL)

